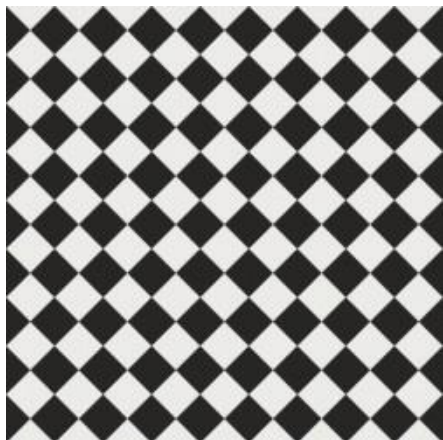
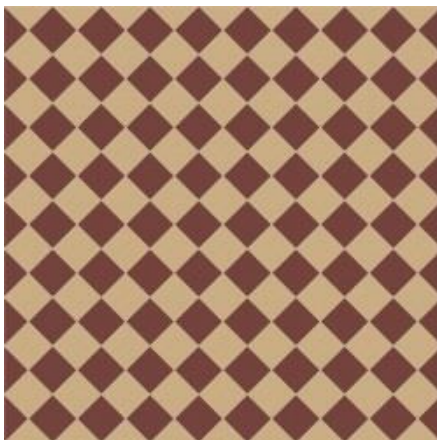


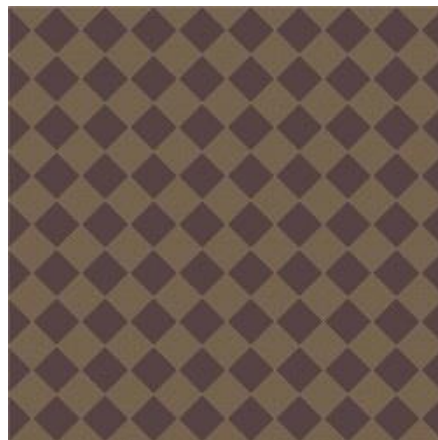
The shapes in this design are available in all 25 colours, below are just a few of the colour combinations you can choose from. The tiles are frost resistant and suitable for both interior and exterior use. The below shows a range of colour combinations of the designs, remember though they are just suggestions, feel free to change the colours



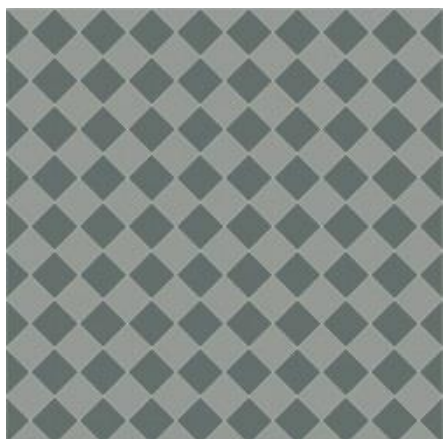
Ennerdale 50 A



Ennerdale 50 B



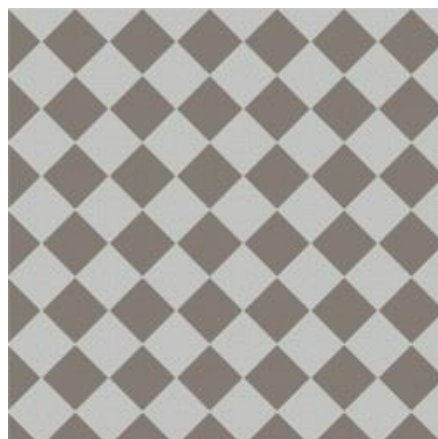
Ennerdale 50 C



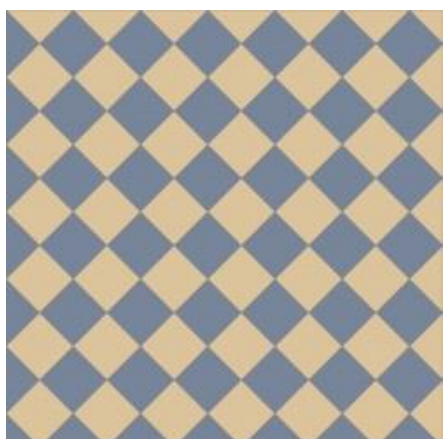
Ennerdale 50 D



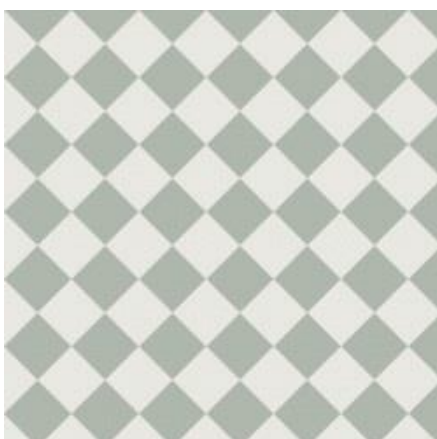
Ennerdale 70 A



Ennerdale 70 B



Ennerdale 70 C



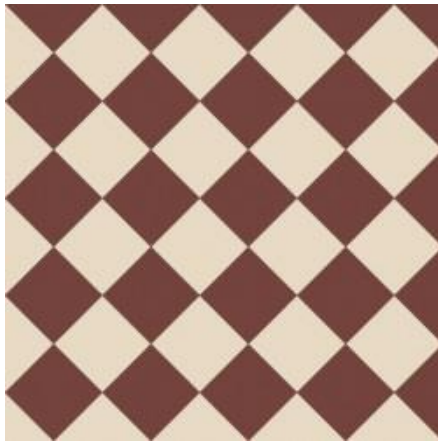
Ennerdale 70 D



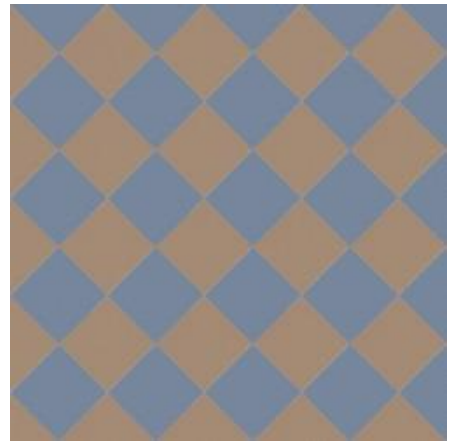
Ennerdale 100 A



Ennerdale 100 B



Ennerdale 100 C



Ennerdale 100 D



Ennerdale 150 A



Ennerdale 150 B



Ennerdale 150 C



Ennerdale 150 D

Thickness Max 10mm (except Steptreads)

Water absorption 0.1 to 0.5%

Surface resistance 7 - mohs scale

Crush resistance Min 3200 kgf/cm<sup>2</sup>

Flexural strength Able to withstand min 380 kgf/cm<sup>2</sup>

Frost resistance No damage after 50 tests +200C to -150C

Heat resistance No change

Slip resistance European Standard R10

# Colour Chart

<p>White</p> 	<p>Super White</p> 	<p>Pale Green</p> 	<p>Green</p> 	<p>Dark Green</p> 
<p>Pistachio</p> 	<p>Pale Blue</p> 	<p>Blue</p> 	<p>Dark Blue</p> 	<p>Pearl Grey</p> 
<p>Pale Grey</p> 	<p>Grey</p> 	<p>Anthracite</p> 	<p>Ivory</p> 	<p>Cognac</p> 
<p>Linen</p> 	<p>Vanilla</p> 	<p>Yellow</p> 	<p>Coffee</p> 	<p>Brown</p> 
<p>Pink</p> 	<p>Old Pink</p> 	<p>Parme</p> 	<p>Red</p> 	<p>Black</p> 

Colours shown are as accurate as the printing process allows, tile samples should be viewed